

Jan



P.O. Box 9796
Nadi Airport
Fiji Islands

TEL: 679 6726710
FAX: 679 6728549
EMAIL: travel@aptc.com.fj
WEB: www.aptc.com.au

Pre - accommodation – Matamanoa Island Resort



Bula Vinaka,

Quotation Name: Sofitel Fiji Resort – Matamanoa Island Resort
Date of Travel: 01st April 2024 – 31st May 2024
Duration of Stay: 4 Days/3 Nights
No. of Pax: 2 Adults

Arrival: Day 1

International Arrival Meet & Greet [English Speaking]

English Speaking Meet and Greet Service with welcome fresh tropical flower lei, chilled bottles of Fiji water and fresh towels; exchange service vouchers, 24-Hour English Speaking Hotline.



Clients will connect their **Private Car Transfer** from Nadi Airport to **Denarau Marina**. Clients will board their **Catamaran Transfer** over to **Matamanoa Island Resort**.

SCHEDULED DAILY CATAMARAN TRANSFERS

Departs Denarau Marina @ 12:00pm and Arrives at Matamanoa Island Resort @ 01:30pm

******Important to note that there is only one (1) scheduled transfer operating daily******

Service Total

See Below

Check In: Day 1

Check Out: Day 4

MATAMANOA ISLAND RESORT – MAMAMANUCA

3 Nights' Accommodation in a **Resort Room**

Including Full American Breakfast daily for 2pax

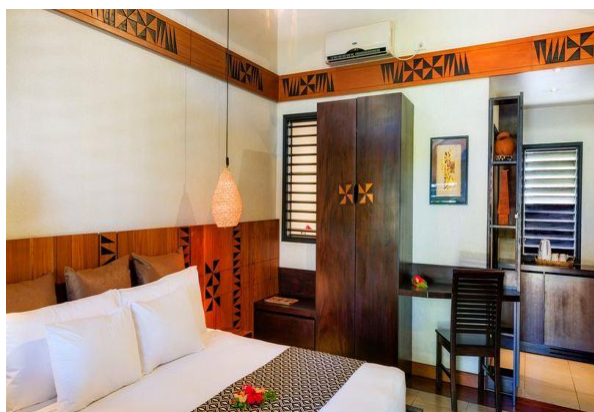
OPTIONAL MEAL PLANS:

HALFBOARD:

F\$120.00pp per day (Dinner choice of nightly special or ala la carte (dinner menus change nightly).

FULLBOARD:

F\$175.00pp per day (2 Course Lunch & Dinner choice of nightly special or ala la carte



Resort Details:

The Island boasts a volcanic cone jutting out of the turquoise/aqua blue waters of this unspoilt area of the Fiji Islands. Clad with dense bush and palm trees, the brilliance of the vegetation contrasts magnificently with the white curved sandy beach and pristine coral reefs. Created for those who want to forget the pressures of their business or busy lifestyle or for those who dream of peace and tranquility. In an effort to achieve this special atmosphere, Matamanoa Island Resort has adopted a year round policy of not permitting children under the age of 16 years. Matamanoa Island can offer you total relaxation or a wide range of leisure activities and cultural excursions.

Resort Room Description:

Thirteen Resort Rooms, ground level all in a row, set amongst tropical gardens. Air conditioning and overhead fan, king size bed, refrigerator, tea/coffee making facilities, coffee plunger, clock/radio, small patio with daybed. Ensuite bathroom, single vanity and Caesar stone bench, European fittings and Italian tiles – hair dryer, bathrobe & amenities. Resort Rooms will accommodate a couple, or king

bed can be spilt into two singles.

Service Total

See Below

Transfer: Day 4

Check-out of **Matamanoa Island Resort** and board **Catamaran Transfer** over to Denarau Marina. Upon arrival at the Marina, where clients will connect their **Private Car Transfer** over to **Sofitel Fiji Resort & Spa**.

SCHEDULED DAILY CATAMARAN TRANSFERS

Departs Matamanoa Island Resort @ 01:30pm and Arrives at Denarau Marina @ 03:15pm

****Important to note that there is only one (1) scheduled transfer operating daily****

Service Total

See Below

Quote is based on 2 Adults Travelling!!

Total Costs net to APTC Fiji for above Package, accommodation for 2 pax in a double room **FJD2599.00**

OPTIONAL UPGRADE TO A BEACHFRONT BURE @ MATAMANOA ISLAND RESORT



Beachfront Bure Description:

Twenty spacious 54 sq metre air-conditioned bures with king size bed and sofa bed, granite top bar with refrigerator, tea/coffee making facilities, coffee plunger, clock/radio, coffee table, chair, personal safe plus patio with hammock and outdoor table and two chairs. The Bures are of traditional Fijian design with high ceilings lined with hand painted tapa, they have been designed to catch the breeze and feature louvered windows throughout, overhead fans and sliding glass doors opening on to the patio which overlooks the ocean. Ensuite bathroom with twin vanities, granite bench, state of the art fittings, Italian tiles, hair drier, bathrobes & amenities. Bures will accommodate maximum 3 adults.dd

Additional cost for an upgrade to 3Nights

FJD 999.00

Important Notes:

- All rates are Net Fiji Dollars inclusive of all Government Taxes.
- Above is a quote only, rooms are subject to availability.

MATAMANOA ISLAND RESORT CANCELLATION POLICY:

- Cancellations within 33 Days - 3 nights will be charged
- Cancellations within 18 Days or No Show - full stay booked will be charged.

- *Late amendments for change of date only within 33 days - 3 nights will be charged*
- *Please note that this is an additional fee to the booking. Any reduction on room nights booked will be charged the above cancellation policy plus the late amendment fee*

We hope that this meets your requirements. Email us directly for any further information or reservation.

Kind regards,

Monika Oldenburg

Managing Director

Telephone: +679 6726710

General email: travel@aptc.com.fj